

BARTIN UNIVERSITY

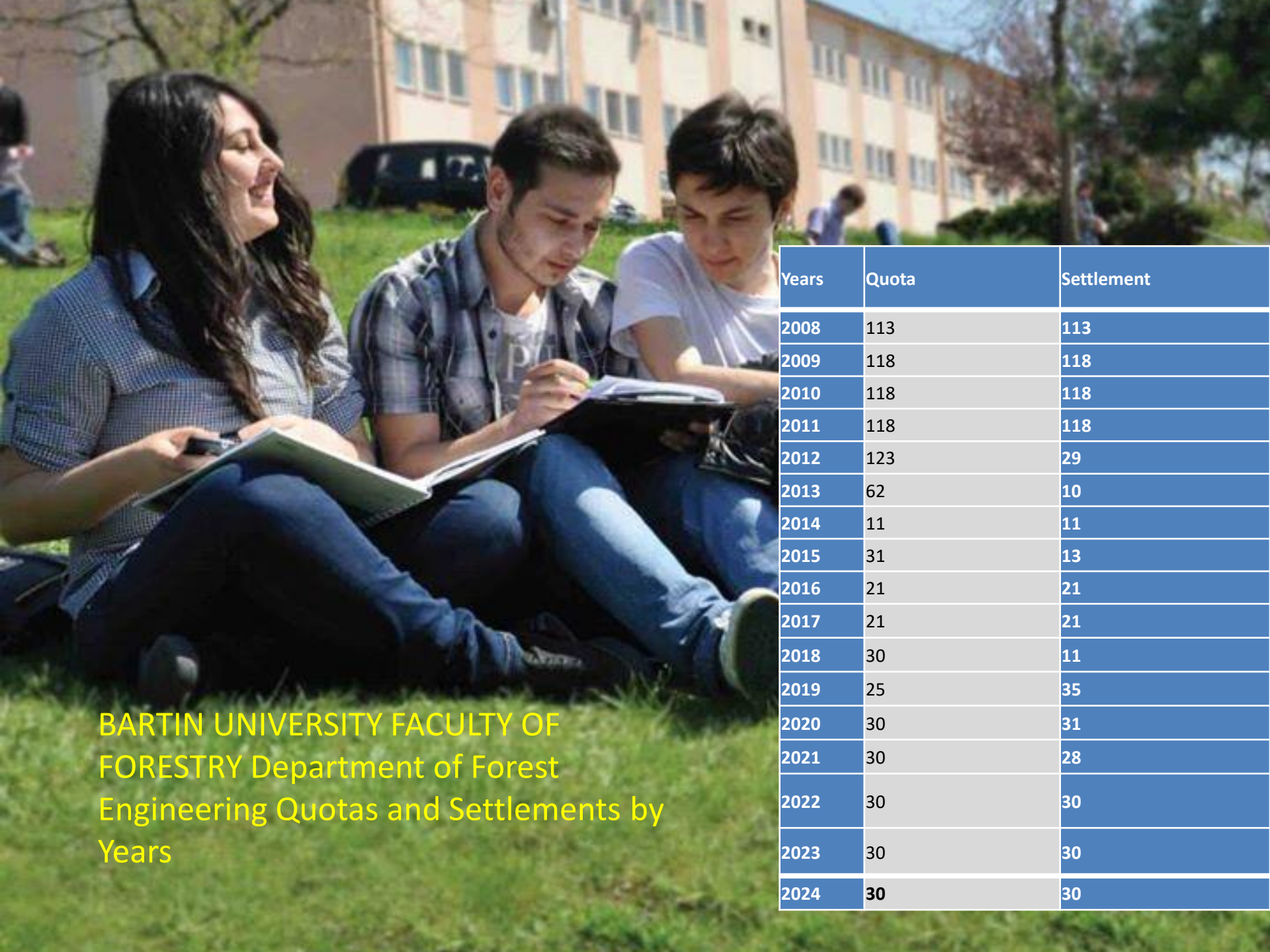


Welcome to the Department of Forest Engineering



Faculty of Forestry was established in 1992, affiliated to Zonguldak Karaelmas University. Our department, which started its education life in 1993, had its first graduates in 1997. It continues its activities by connecting to Bartın university in 22 May 2008.





BARTIN UNIVERSITY FACULTY OF FORESTRY Department of Forest Engineering Quotas and Settlements by Years

Years	Quota	Settlement
2008	113	113
2009	118	118
2010	118	118
2011	118	118
2012	123	29
2013	62	10
2014	11	11
2015	31	13
2016	21	21
2017	21	21
2018	30	11
2019	25	35
2020	30	31
2021	30	28
2022	30	30
2023	30	30
2024	30	30

SOCIAL MEDIA

bartinorman ▾ ●

130
Çönderi

901
Takipçi

661
Takip

BÜ Orman Mühendisliği Bölümü
Bartın Üniversitesi Bartın Orman Fakültesi Orman Mühendisliği Bölümü resmi
instagram hesabı
[ormanmuh.bartın.edu.tr/](https://www.instagram.com/ormanmuh.bartın.edu.tr/)

Profili Düzenle Profili paylaş

Öne Çıkanlar

Öne Çıkanlar

2022

BARÜ TÜBİTAK Öğrenci Projesinde Türkiye'de Odu

BARÜ TÜRKİYE'DE OLDU 3.

İşveren Memnuniyet Anketi

5 Uluslararası Odun Dışı Ürün Çıkarım Deneyi

non-woodbartın.com

BARTIN ÜNİVERSİTESİ

EN | TR

f t youtu be

NEWS

ABOUT US

EDUCATION AND TRAINING

RESEARCH

CANDIDATE STUDENTS

Course Information Package

Bartın University
Department of Forest Engineering



NEWS



Takip ediliyor

Bartın Üniversitesi/Orman Mühendisliği Bölümü

@bartinormanmuh

Bartın Orman Fakültesi

Bartın, Türkiye Eylül 2018 tarihinde katıldı

73 Takip edilen 293 Takipçi



Birsen Durkaya, Bartın Üniversitesi Orman Fakültesi, ORHAN UZUN ve 2 kişi daha takip ediyor

Bana Soru Sor



RE NE

DIFFERENT IMAGES FROM THE DEPARTMENT OF FORESTRY ENGINEERING



OUR MISSION

- The mission of the Forest Engineering undergraduate program at Bartın University, Faculty of Forestry is to train engineers and researchers who are expert on the establishment, management, operation of forests, standardization, quality control and marketing of processed forest products, who have the ability to use modern engineering tools to analyze and solve the problems they encounter, and who have the ability to match their knowledge with practice.
- To produce nationally and internationally accepted knowledge and contribute to technological development in the field of Forest Engineering Science in parallel with contemporary and current developments.

OUR VISION

- The vision of our department is to gain a respected, high-quality, accredited education and research center not only on a national scale but also internationally with all its departments;
- To transform the knowledge gained into social and industrial benefit,
- To be able to follow global developments and at the same time have the courage to compete,
- To be able to adapt to interdisciplinary work environments, to produce solutions by collaborating with stakeholders in professional solutions, to be able to express themselves in the best way in their field, to have self-confidence,
- To be able to conduct basic experimental studies in their field and evaluate the data they obtain, to have investigative characteristics and to have learned the principles of accessing information,
- To be successful in written and verbal communication, to be able to express themselves in the best way, to be more prominent in their own fields of work, to have persuasion skills and self-confidence,
- To be beneficial to their country and humanity, to train undergraduate and graduate students.
- To follow scientific and technological developments related to its field in our country and in the world,
- To ensure that our country and the forest products industry sector become a leader and strong in the national and international arena with undergraduate and graduate education and training activities,
- To be the superior and best education-training department in our country with its corporate culture, values and quality.

BARTIN'S FOREST RICHNESS





- Located in the Western Black Sea region, which is approximately 65% covered with forests, Bartın University Forest Engineering Department stands out with its strong academic staff, practical training, the advantage of being close to forests, and student-focused education.

RESEARCH AND PROJECTS

- BARTIN FACULTY OF FORESTRY TOOK PART IN THE UNITED NATIONS MOUNTAIN PARTNERSHIP WITH THE TÜBİTAK-1001 PROJECT
- WITH OUR FACULTY'S PROJECT, THE EFFECTS OF STREAM COASTAL ZONES ON MYCORRHIZES WILL BE INVESTIGATED FOR THE FIRST TIME
- WITH THE PROJECT OF BARTIN FACULTY OF FORESTRY SUPPORTED BY TÜBİTAK, THE EFFECTS OF DEAD AND LIVE COVER ON SURFACE FLOW AND SOIL LOSS WILL BE INVESTIGATED
- BARTIN FACULTY OF FORESTRY TÜBİTAK 2209-A UNIVERSITY STUDENTS CONTINUE TO BE AT THE FOCUS OF RESEARCH PROJECTS

RESEARCH AND PROJECTS

- With the TUBITAK projects, we contribute to the development of our students studying in our department and our graduates who are doing their master's and doctorate degrees.
- These studies are published in quality scientific journals and brought to the scientific world..

JOB OPPORTUNITIES

- Our graduate students can work in units affiliated with the General Directorate of Forestry, as academics in universities, and as freelance forest engineers by establishing their own companies.
- In addition, constant communication is established with our graduates and activities are carried out regarding the development and future of our current students.

FOREST ENGINEERING DEPARTMENT COURSES

- **Education duration: 4 years (8 semesters)**
- **Courses are theoretical and practical,**
- **Total 63 compulsory + 16 elective courses (2 of which are outside the department)**
- **30 ECTS each Semester, 240 ECTS in total,**
- **20-day Internship in 2nd and 3rd grades,**
- **4th grade Graduation Thesis, Technical Trip Academic**

Cooperation Programs within the Scope of ERASMUS: Forest Engineering (Bachelor - Master's- Doctoral)

- UNIVERSITY OF SOUTH BOHEMIA IN CESKE BUDEJOVICE (ČEKYA)
- UNIVERSITY OF NAPOLI FEDERICO II (Italy)
- UNIVERSITA DEGLI STUDI DELLA TUSCIA (Italy)
- PRZYRODNICZY TECHNICAL UNIVERSITY (Poland)
- WARSAW UNIVERSITY OF LIFE SCIENCE (Poland)
- KROSNO STATE COLLEGE (Poland)
- UNIVERSITY OF TESSALY (Greece)
- INIVERSITAT POLITECNICA DE VALENCIA (Spain)
- WEST HUNGARY UNIVERSITY (Hungary)
- UNIVERSITY OF EVORA (Portugal)
- UNIVERSITY OF FORESTRY (BULGARIA)

DEPARTMENT OF FOREST ENGINEERING

Academic staff

- 11 Professors,
- 8 Associate Professors,
- 2 Dr. Lecturer of Member
- 5 Research Assistants

There are 26 faculty members including:

There are 11 departments in the Department of Forest Engineering

- 1) Forest Botany
- 2) Forest Management
- 3) Watershed Management
- 4) Forest Entomology and Conservation
- 5) Silviculture Forestry
- 6) Economics Forestry
- 7) Policy
- 8) Forestry Law
- 9) Soil Science and Forest Ecology
- 10) Forest Construction and Transportation
- 11) Measurement Information and Cadastre

FOREST BOTANY ABD

- In the department where students are given courses such as General Botany, Gymnospermae (Gymnosperms) and Angiospermae (Closed-seeded Plants), scientific studies are carried out on subjects such as plant systematics, wood anatomy and dendrochronology.
- Our instructors in the department;
- Prof. Dr. Barbaros YAMAN
- Res. Asst. Esra PULAT

FOREST MANAGEMENT ABD

- In the department where our students are given courses such as Dendometry, Yield Information, Photo Interpretation, Forest Management, studies such as plant biomass and carbon stocks are emphasized.
- Our department teachers;
- Prof. Dr. Ali DURKAYA
- Prof. Dr. Birsen DURKAYA
- Assoc. Prof. Dr. Sinan KAPTAN

WATERSHED MANAGEMENT ABD

- In the department where our students are given courses such as Basin Management, Rangeland Management, Soil Protection, studies on erosion, interception and mycorrhiza are emphasized.
- Our Department Teachers;
- Assoc. Prof. Dr. Şahin Palta
- Assist. Prof. Hüseyin ŞENSOY
- Res. Asst. Eren BAŞ

FOREST ENTOMOLOGY AND CONSERVATION ABD

- In the department where our students are given courses such as Zoology, Phytopathology, Forest Entomology, Forest Protection, studies on insect damage and control, forest fires, wildlife are emphasized.
- Our Department Teachers;
- Prof. Dr. Azize TOPER KAYGIN
- Assoc. Prof. Dr. Yafes YILDIZ
- Assoc. Prof. Dr. Mertol ERTUĞRUL
- Assoc. Prof. Dr. Nuri Kaan ÖZKAZANÇ

SILVICULTURE ABD

In the department where our students are given courses such as Silviculture, Silviculture Technique, Afforestation Technique, Forest Care, studies are carried out on the effects of Silvicultural interventions, seed, origin experiments and genetics.

Our department teachers;

Prof. Dr. Erol KIRDAR

Prof. Dr. Halil Barış ÖZEL

FORESTRY ECONOMY ABD

- In the department where our students are taught courses such as economics, entrepreneurship, forestry business economics, and marketing, studies are carried out on topics such as rural development and certification.
- Our department instructors;
- Prof. Dr. İsmet DAŞDEMİR
- Prof. Dr. Ersin GÜNGÖR
- Res. Asst. Dr. Yağmur YEŞİLBAŞ

FOREST POLICY ABD

- In the department where our students are given courses such as Forestry policy, Management information, Social forestry, Public relations in forestry, studies are carried out on subjects such as National parks...
- Our department teacher;
- Dr. Lecturer Hikmet Batuhan GÜNŞEN

FORESTRY LAW ABD

- It is a department where courses such as forestry law and environmental development law (PEM) are given, and after basic legal knowledge, subjects such as forest ownership and cadastre, forest crimes, permits given by state forests, and professional law are covered.
- Our instructor in the department;
- Assoc. Prof. Dr. Gökçe GENÇAY

SOIL SCIENCE AND ECOLOGY ABD

- In the department where courses such as Soil Science, General Ecology, Meteorology and Climatology, Forest Ecology are given, studies are carried out on soil chemistry, soil microbiology, carbon and nitrogen stocks of soils.
- Our instructors in the department;
- Assoc. Prof. İlyas Bolat
- Dr. Kamil Çakıroğlu

FOREST CONSTRUCTION AND TRANSPORT ABD

- It is the department where our students are given courses such as Forest roads, Transport technique, Mechanism, Ergonomics.
- Our department teachers;
- Prof. Dr. Metin Tunay
- Prof. Dr. Tuğrul Varol
- Asst. Lecturer Tuna Emir

MEASUREMENT INFORMATION AND CADASTRE ABD

- It is the department where courses such as measurement information, remote sensing, GIS are given.
- Our department teachers;
- Prof. Dr. Ayhan ATEŞOĞLU
- Res. Asst. F. Şevval BULUT

SOIL SCIENCE AND ECOLOGY LABORATORY



SOIL SCIENCE AND ECOLOGY LABORATORY

- In the laboratory, many physical, chemical and biological analyses of soils (texture, bulk density, pH, organic carbon, total nitrogen, microbial carbon and nitrogen, soil respiration, etc.) can be performed for our students for both practical and scientific research purposes.

WATERSHED MANAGEMENT LABORATORY



- In the laboratory, many physical analyses of soils (texture, bulk density, grain density, permeability, etc.) can be performed for our students for both practical and scientific research purposes.

FOREST ENTOMOLOGY AND CONSERVATION LABORATORY



- Many insect species that are widespread in our region and country are kept in the laboratory for both use in applications and for various researches.

SEED TECHNOLOGY AND SILVICULTURE LABORATORY



FOREST MANAGEMENT LABORATORY

- It is a laboratory established to practice courses such as Dendrometry, Yield Information, Photo Interpretation, Forest Management and to conduct various scientific researches.



FOREST CONSTRUCTION AND TRANSPORT LABORATORY

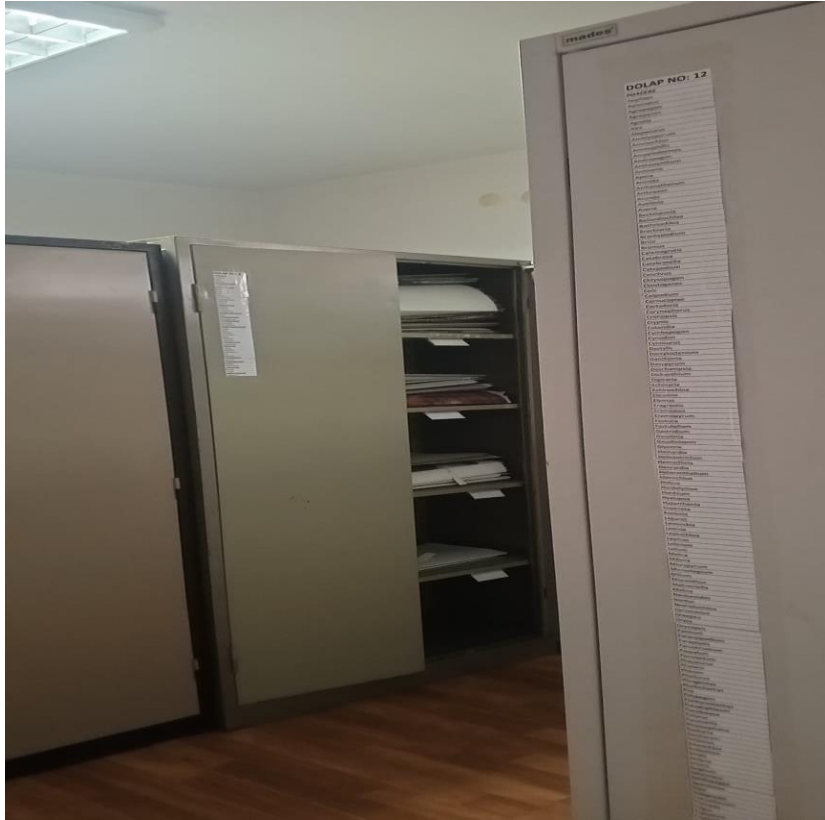


It is a laboratory established to practice in courses such as Surveying Information, Forest Roads, Transport Technique and to carry out various scientific researches.

PROF. DR. ZAFER KAYA HERBARIUM



PROF. DR. ZAFER KAYA HERBARIUM



In the herbarium where the name of our late teacher Prof. Dr. Zafer KAYA lives on, dried plant samples are stored by arranging them in a certain system.

SOCIAL OPPORTUNITIES

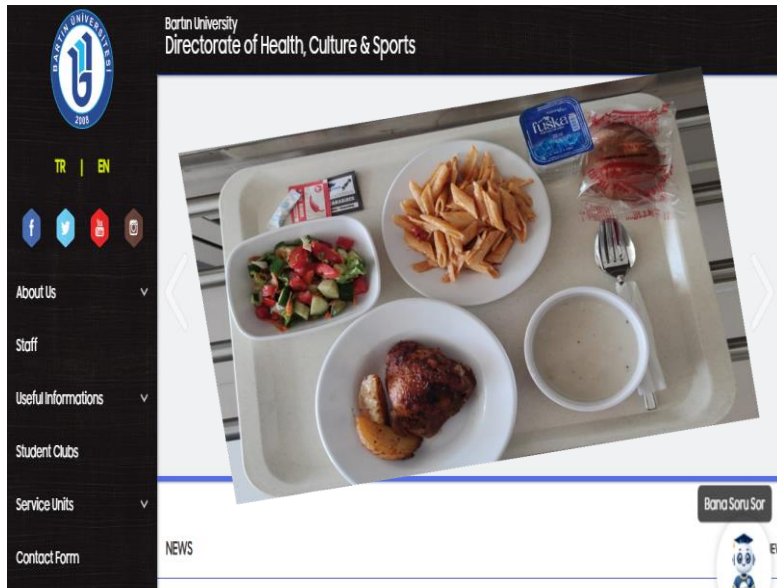
- Social activities such as extracurricular activities and guidance are carried out with our students.
- Our students can benefit from facilities such as libraries, gyms and fields, dining halls, and medical services as they wish.

- OUR FACULTY IS FIRST IN THE 3RD FOREST OLYMPIC GAMES

ORIENTATION TRAINING WAS HELD FOR BARTIN FACULTY OF FORESTRY 1ST YEAR STUDENTS



DINING HALL, LIBRARY, SPORTS FACILITIES, MEDICO



Sports facilities
Fitness centre, indoor sports hall and football pitch



Library



Our university library supports scientific research studies. It follows the latest data of world science, which is enriched with new publications developing every day.

Medico Social Services

Services such as Temperature Measurement
Blood Pressure Monitoring
Examination Prescription Arrangement
Dressing
Prescription Injection are provided



Psychological Counseling and Guidance Application and Research Center (PDREM)

- <https://www.youtube.com/watch?v=rcj-Du1BKQA>
- To apply, it is sufficient to come to the center in person and make an appointment or fill out the online application form.
- All services provided are free of charge.
- What you share during the counseling sessions will remain confidential. In other words, no information that will reveal your identity such as your name, age, department you study/work in, etc. will be shared with third parties. You may be asked to fill out some forms or surveys throughout the process. The information you share will be kept confidential

PART TIME STUDENT EMPLOYMENT

- In each academic year, a certain number of our students work part-time in our university's Library, Departments, Dean's Office, Course Laboratories, Education and Research Projects, Computer Laboratories, etc. It is employed to provide support in the units.
- Quotas are announced on the website and bulletin boards by the Department of Health, Culture and Sports at the beginning of October or when necessary.
- The announcement clearly states how many part-time students will be employed in which units and in what kind of jobs, the nature of the job to be employed, the conditions required for the students to be employed, the weekly working hours and the wage to be paid for one hour of work, the documents required for the application, the application location and date

MUDEK

- The Association for Evaluation and Accreditation of Engineering Programs (MÜDEK) is an independent organization that aims to contribute to the improvement of the quality of engineering education by conducting accreditation, evaluation and information studies for engineering education programs in various disciplines.

PURPOSE OF MUDEK

- The aim of MÜDEK is to contribute to the improvement of the quality of engineering education by conducting accreditation, evaluation and information studies for engineering education programs in different disciplines, thus ensuring that the welfare of society is advanced by training better educated and more qualified engineers who understand current and developing technologies.

MUDEK ACCREDITATION

- As a result of its work in the field of quality and accreditation, Bartın Faculty of Forestry managed to be accredited by the Engineering Education Programs Evaluation and Accreditation Association (MÜDEK).
- MÜDEK; During the accreditation process, the Forest Engineering and Forest Industrial Engineering Programs were examined according to different criteria such as education, research and development, physical infrastructure, laboratory facilities and academician qualifications. As a result of the evaluations, our Forest Engineering and Forest Industrial Engineering programs were accredited for 2 years.



TUBİTAK 2209-A PROJECTS

- We are ahead of many universities in Turkey with many TUBİTAK 2209-A student projects run by our students and supervised by our professors.
- We aim for the same success with our new students and contribute to the scientific development of our students.



TÜBİTAK 2209-A PROJELERİ

- Bartın Faculty of Forestry students came first in TÜBİTAK 2209-A Student Projects in 2023 with the R&D and Quality Culture they adopted.
- According to the announced TÜBİTAK 2209-A Student Projects 2023 results, 32 projects of our students were deemed worthy of support.
- Our students ranked first in our University and among all Forestry Faculties with 32 accepted TÜBİTAK 2209-A Student Projects. The 81 TÜBİTAK Student Projects supported by our students in the last 3 years constitute 12% of the 680 projects supported in our University in the last 3 years. One in every three students studying at our faculty managed to produce a project.
- In addition to these, 19 of our projects were accepted in 2022. In 2024, a total of 48 project applications were made.



ALUMNI AND INTERNAL STAKEHOLDERS

- It is a system where all our students who graduated from our university and are still studying can register. It also aims to collect all our students' personal and professional information in a single pool and to make more effective career planning. All our graduates and students who register to the Alumni Information System can communicate with companies that are users of the system, create a CV, get career opportunities from job postings and maintain their connection with our University permanently. In this way, it is aimed to provide direct job opportunities to our students and help them start their careers earlier.
- As Bartın University, our aim is to bring together the communication between employers/companies and employees/students with the graduate information system interface, to obtain information about which companies our graduate students work in, to create statistics and to continue our education activities in line with this purpose by making future workforce planning.

INTERNAL STAKEHOLDERS



- Studies are carried out for the development and future of our students by constantly communicating with alumni and internal stakeholders.

IMAGES OF LABORATORIES IN OUR
DEPARTMENT AND APPLICATIONS WITH
STUDENTS

TECHNICAL TRIPS

Some of our courses are taught to our students in field conditions, making the information more permanent.























Field application carried out in Safranbolu-Ahmetusta location within the scope of Gymnospermae course



Field application carried out within the scope of "Nursery Techniques" course



**Made within the scope of the "Engineering Design"
course project presentations**



VISIT TO NURSERY AND REJUVENATION AREA





Forest Fire Fighting Drill



VISIT TO FOREST WAREHOUSE



Forest Protection Studies



Cones Collected for Seeds





Forestry Week events





GRADUATION CEREMONY



ORMAN ENDÜSTRİ
MÜHENDİSLİĞİ

ORMAN MÜHENDİSLİĞİ

BARÜ
BARTIN ORMAN FAKÜLTESİ



The day you share years of hard work with your families

...





**ORMAN
MÜHENDİSLİĞİ**



Academic career

Master's Degree (2+1 years) Forestry Engineer

ALES above 55 50%

Undergraduate GPA above 2.29 20%

Written exam 20% above 60

Foreign Language Master's Degree no limit 10%

TOTAL 60 Points

PhD (4+2 years)



WE ARE A BIG FAMILY

Bartın University
Faculty of Forestry

- ABOUT US
- ADMINISTRATION
- INTERNAL CONTROL
- QUALITY
- DEPARTMENTS
 - Department of Forest Engineering
 - Department of Forest Industrial Engineering
- STAFF MEMBERS
- STUDENTS
- ACCESSIBLE ACCESS

NEWS

Bana Soru Sor

RE NE



THANKS

